

## Economy

# The Institute Employment Report: December 2025

07 January 2026

### Key takeaways

- An estimate of payrolls based on Bank of America internal data shows that year-over-year (YoY) payroll growth rebounded in December to 0.6% YoY, up from 0.2% YoY in November. Meanwhile, the growth in the number of households receiving unemployment benefits remained around 10% YoY in December.
- So, while the labor market appears to still be in a "low-hire, low-fire" mode, the apparent rebound in jobs growth may suggest the worst of the slowdown is behind us.
- After-tax wage growth eased in December across income cohorts, most notably for middle-income households (1.5% YoY vs. 2.3% in November) and higher-income households (3.0% YoY vs. 3.7%). While this may be temporary, it bears watching given potential implications for consumer spending.

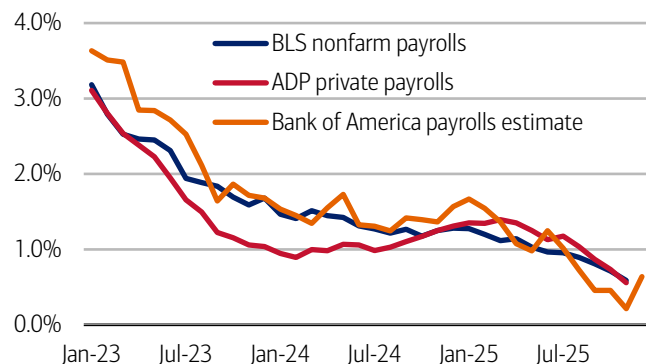
### As the year closed, hiring growth recovered

What was the state of the labor market as 2025 came to an end? While Bank of America internal data suggests payroll growth slowed last year, the "good news" is our data suggests some recovery in December. We also see no sign of an acceleration in the rise in unemployment payments into Bank of America customer accounts. So overall, while the story as the year closed remained one of "low-hire, low-fire," it appears possible that most of the labor market slowdown may have run its course.

We use Bank of America internal deposit data to estimate a payrolls series by looking at how the number of customer accounts receiving a paycheck is changing (see methodology). This data can be fairly noisy, partly due to seasonal variation. However, looking at a three-month moving average, Exhibit 1 suggests that the year-over-year (YoY) growth in our measure rose to 0.6% in December, a rebound from 0.2% YoY in November. This December YoY growth is also similar to that seen in the Bureau of Labor Statistics' (BLS) estimate of payrolls for November, which adds to the impression the slowdown in jobs growth may be over.

#### Exhibit 1: An estimate of payrolls from Bank of America internal data suggests some rebound in YoY jobs growth in December

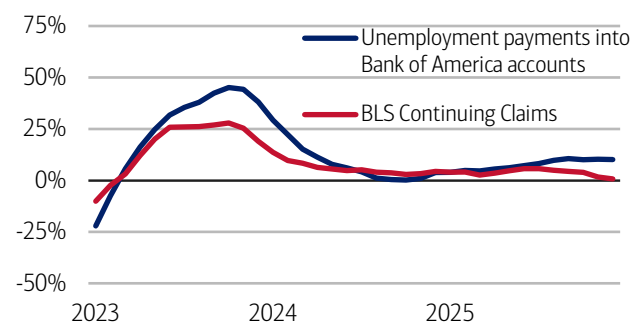
Payroll estimates from Bank of America internal data (three-month moving average, % YoY), the Bureau of Labor Statistics (BLS) and Automatic Data Processing (ADP) (monthly, YoY)



**Source:** Bank of America internal data, Haver Analytics  
BLS and ADP data are seasonally adjusted, Bank of America data is not seasonally adjusted.  
BANK OF AMERICA INSTITUTE

#### Exhibit 2: Unemployment payments into Bank of America customer accounts rose around 10% YoY in December, similar to September-November

Number of households receiving unemployment payments (three-month moving average, YoY%, not seasonally adjusted (NSA)) and Continuing claims (three-month moving average, YoY%, seasonally adjusted (SA))



**Source:** Bank of America internal data, Bloomberg  
December continuing claims YoY data is average for weeks through December 19, 2025.  
BANK OF AMERICA INSTITUTE

We also do not see signs of an acceleration in the rise in unemployment payments into Bank of America customer accounts. Exhibit 2 shows that in December, growth in unemployment payments into Bank of America customer accounts held steady at around 10% YoY, consistent with the rate of growth observed from September through November.

## But higher- and middle-income households' wage growth cooled in December

Over 2025 there was notable slowdown in lower-income households' after-tax wage and salary growth, while higher-income households appeared to see an acceleration (Exhibit 3). This produced a pronounced gap in the wage growth experience between lower- and higher-income households.

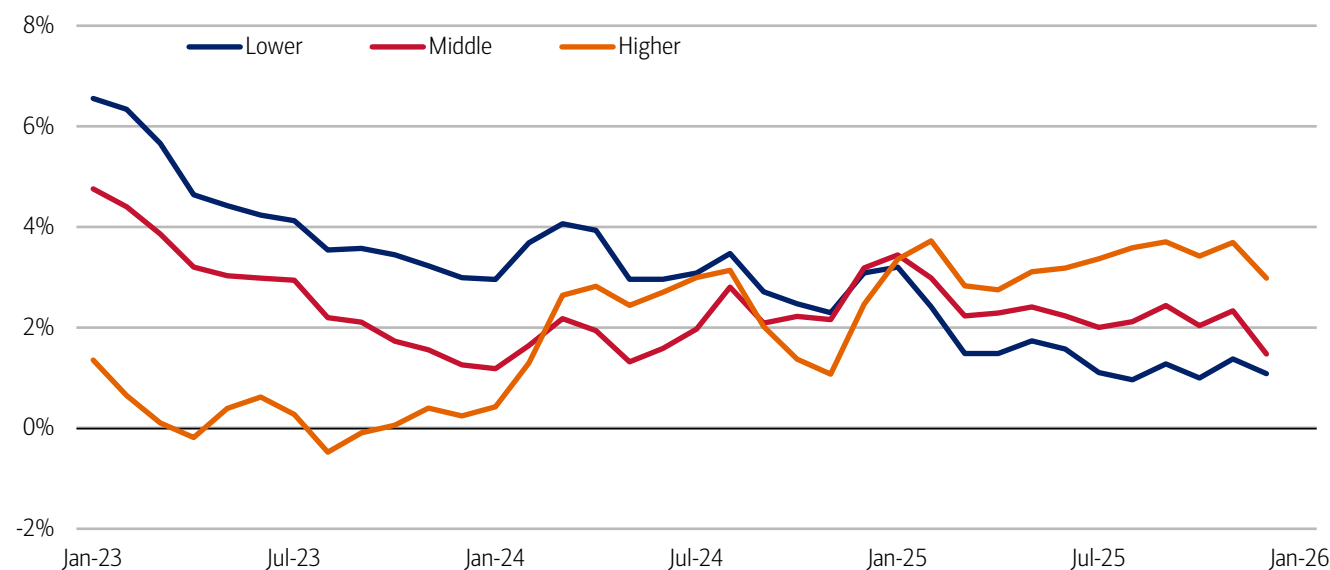
Looking at developments in December, Bank of America deposit data indicates lower-income households' after-tax wage and salary growth eased back to 1.1% YoY, from 1.4% in November. But the "good news" is that the overall deceleration in lower-income households' wage growth over 2025 appears to have largely leveled out.

There was, however, a larger pullback in wage growth for both middle- and higher-income households in December. Middle-income households' wage growth eased to 1.5% YoY in December, from 2.3% in November – the lowest growth rate since May 2024. And higher-income households also saw an easing in wage growth to 3.0% YoY, from 3.7% in November.

In our view, some of these declines in wage growth may prove temporary rather than a more underlying deterioration, though this clearly bears watching. If maintained, it could have negative implications for consumer spending momentum in 2026 – but for now, it is too early to judge.

### Exhibit 3: In December, lower-income households' after-tax wage growth was 1.1% YoY, while higher-income households' wage growth was 3.0% YoY

After-tax wage and salary growth by household income terciles, based on Bank of America aggregated consumer deposit data (3-month moving average, YoY%, SA)



Source: Bank of America internal data

BANK OF AMERICA INSTITUTE

## Methodology

Selected Bank of America transaction data is used to inform the macroeconomic views expressed in this report and should be considered in the context of other economic indicators and publicly available information. In certain instances, the data may provide directional and/or predictive value. The data used is not comprehensive; it is based on **aggregated and anonymized** selections of Bank of America data and may reflect a degree of selection bias and limitations on the data available.

Any payments data represents aggregated spend from US Retail, Preferred, Small Business and Wealth Management clients with a deposit account or credit card. Aggregated spend include total credit card, debit card, ACH, wires, bill pay, business/peer-to-peer, cash, and checks.

Any **Small Business** payments data represents aggregate spend from Small Business clients with a deposit account or a Small Business credit card. Payroll payments data include channels such as ACH (automated clearing house), bill pay, checks and wire. Bank of America per Small Business client data represents activity spending from active Small Business clients with a deposit account or a Small Business credit card and at least one transaction in each month. Small businesses in this report include business clients within Bank of America and generally defined as under \$5mm in annual sales revenue.

Unless otherwise stated, data is not adjusted for seasonality, processing days or portfolio changes, and may be subject to periodic revisions.

The differences between the total and per household card spending growth rate (if discussed) can be explained by the following reasons:

1. Overall total card spending growth is partially boosted by the growth in the number of active cardholders in our sample. This could be due to an increasing customer base or inactive customers using their cards more frequently.
2. Per household card spending growth only looks at households that complete at least five transactions with Bank of America cards in the month. Per household spending growth isolates impacts from a changing sample size, which could be unrelated to underlying economic momentum, and potential spending volatility from less active users.
3. Overall total card spending includes small business card spending while per household card spending does not.
4. Differences due to using processing dates (total card spending) versus transaction date (per household card spending).
5. Other differences including household formations due to young adults moving in and out of their parent's houses during COVID.

Any household consumer deposit data based on Bank of America internal data is derived by anonymizing and aggregating data from Bank of America consumer deposit accounts in the US and analyzing that data at a highly aggregated level. Whenever median household savings and checking balances are quoted, the data is based on a fixed cohort of households that had a consumer deposit account (checking and/or savings account) for all months from January 2019 through the most current month of data shown.

Bank of America aggregated credit/debit card spending per household includes spending from active US households only. Only consumer card holders making a minimum of five transactions a month are included in the dataset. Spending from corporate cards are excluded. Data regarding merchants who receive payments are identified and classified by the Merchant Categorization Code (MCC) defined by financial services companies. The data are mapped using proprietary methods from the MCCs to the North American Industry Classification System (NAICS), which is also used by the Census Bureau, in order to classify spending data by subsector. Spending data may also be classified by other proprietary methods not using MCCs.

We consider a measure of services necessity spending that includes but is not limited to childcare, rent, insurance, public transportation, and tax payments. Discretionary services includes but is not limited to charitable donations, leisure travel, entertainment, and professional/consumer services. Holiday spending is defined as items in which spending in the November-December period is usually at least 20% of total annual spending on the category.

For analysis looking at higher value transactions (including durables), we consider a value per transaction threshold estimated with reference to the top 30% of transactions by value in 2024. The share of higher value transactions is then the number of transactions above this threshold as a percentage of total transactions over time.

Lower, middle and higher household income cuts in Bank of America credit and debit card spending per household, and consumer deposit account data are based on quantitative estimates of each households' income. These quantitative estimates are bucketed according to terciles, with a third of households placed in each tercile periodically. The lowest tercile represents 'lower income', the middle tercile represents 'middle income' and the highest tercile 'higher income'. The income thresholds between these terciles will move over time, reflecting any number of factors that impact income, including general wage inflation,

changes in social security payments and individual households' income. The income and tercile in which a household is categorised are periodically re-assessed.

Generations, if discussed, are defined as follows:

1. Gen Z, born after 1995
2. Younger Millennials: born between 1989-1995
3. Older Millennials: born between 1978-1988
4. Gen Xers: born between 1965-1977
5. Baby Boomer: 1946-1964
6. Traditionalists: pre-1946

Any reference to card spending per household on gasoline includes all purchases at gasoline stations and might include purchases of non-gas items.

Estimate of payrolls growth from Bank of America internal data is based on the change in customer accounts receiving a paycheck in the month. An adjustment is made for the difference between overall population growth and customer account growth.

Additional information about the methodology used to aggregate the data is available upon request.

## Contributors

### David Michael Tinsley

Senior Economist, Bank of America Institute

## Sources

### Li Wei

Director, Global Risk Analytics

### Yan Peng

Vice President, Global Risk Analytics

### Akshita Jain

Assistant Vice President, Global Risk Analytics

### Prachi Gupta

Officer, Global Risk Analytics

# Disclosures

These materials have been prepared by Bank of America Institute and are provided to you for general information purposes only. To the extent these materials reference Bank of America data, such materials are not intended to be reflective or indicative of, and should not be relied upon as, the results of operations, financial conditions or performance of Bank of America. Bank of America Institute is a think tank dedicated to uncovering powerful insights that move business and society forward. Drawing on data and resources from across the bank and the world, the Institute delivers important, original perspectives on the economy, sustainability and global transformation. Unless otherwise specifically stated, any views or opinions expressed herein are solely those of Bank of America Institute and any individual authors listed, and are not the product of the BofA Global Research department or any other department of Bank of America Corporation or its affiliates and/or subsidiaries (collectively Bank of America). The views in these materials may differ from the views and opinions expressed by the BofA Global Research department or other departments or divisions of Bank of America. Information has been obtained from sources believed to be reliable, but Bank of America does not warrant its completeness or accuracy. These materials do not make any claim regarding the sustainability of any product or service. Any discussion of sustainability is limited as set out herein. Views and estimates constitute our judgment as of the date of these materials and are subject to change without notice. The views expressed herein should not be construed as individual investment advice for any particular person and are not intended as recommendations of particular securities, financial instruments, strategies or banking services for a particular person. This material does not constitute an offer or an invitation by or on behalf of Bank of America to any person to buy or sell any security or financial instrument or engage in any banking service. Nothing in these materials constitutes investment, legal, accounting or tax advice. Copyright 2026 Bank of America Corporation. All rights reserved.